



## *Elaeagnus angustifolia*

Russian Olive

Elaeagnaceae

**BEST ID:** Silvery tomentose covering on one side of branch, thorns

**LEAF:** Alternate, simple, oblong-lanceolate to linear-lanceolate, 1-4" long, entire

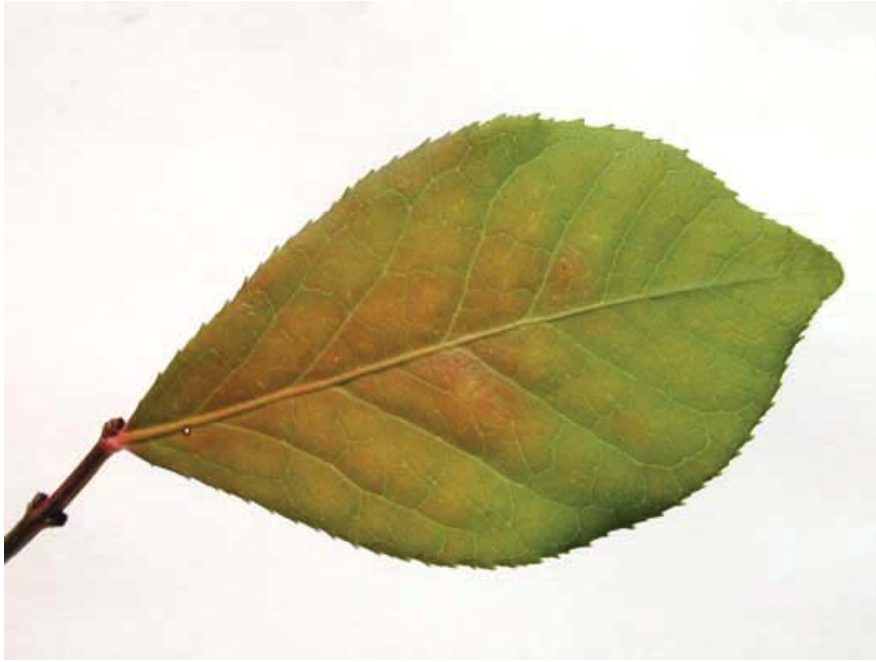
**PROBLEMS:** Leaf spots, cankers, rusts, verticillium wilt, crown gall, oleaste-thistle aphid, scales

**SOIL PREFERENCE:** Light sandy loam, but adapted to most soil conditions

**NOTES:**

**NATIVE HABITAT:** Europe, Asia

LAB	FORM	DIA.	HEIGHT	ZONE	pH	MOIST.	SUN
	Globose	20	20	3	N	M	F



## *Euonymus alatus*

Winged Euonymus

Celastraceae

**BEST ID:** Greenish-brown stem with corky wings

**LEAF:** Opposite to subopposite, simple, elliptic to obovate, 1-3" long, 1/2-1 1/4" wide, serrate

**PROBLEMS:** None serious

**SOIL PREFERENCE:** Well-drained; adapted to most soil conditions

**NOTES:** Beautiful bright red fall color. Excellent landscape plant.

**NATIVE HABITAT:** Asia

LAB	FORM	DIA.	HEIGHT	ZONE	pH	MOIST.	SUN
11	Spreading	15	15	3	N	M	F



## *Euonymus kiautschovicus*

Spreading Euonymus

Celastraceae

**BEST ID:** Large shrub, leaves green back and front

**LEAF:** Simple, opposite, evergreen or semi-evergreen, 2-3” long, crenate-serrulate, broad-elliptic or obovate to oblong

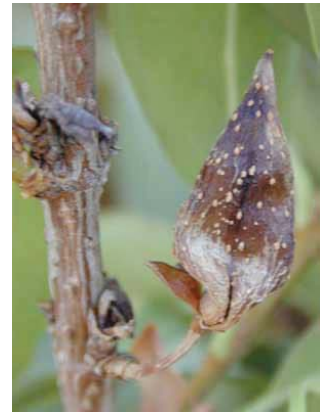
**PROBLEMS:** Usually resistant to euonymus scale

**SOIL PREFERENCE:** Well-drained

**NOTES:** Typically used for screens, hedges, or massing

**NATIVE HABITAT:** China

LAB	FORM	DIA.	HEIGHT	ZONE	pH	MOIST.	SUN
	Upright	10	10	5	N	M	P



## *Forsythia x intermedia*

Forsythia

Oleaceae

**BEST ID:** Yellowish-brown stem, prominent lenticels, square or 4-sided

**LEAF:** Opposite, simple, serrate, ovate-oblong to oblong-lanceolate, 3-5" long

**PROBLEMS:** Crown gall, leaf spot, dieback, four-lined plant bug, Japanese weevil, root-knot nematode, spider mite

**SOIL PREFERENCE:** Adapted to most soil conditions

**NOTES:** Flower buds not as cold hardy as vegetative buds

**NATIVE HABITAT:** Asia

LAB	FORM	DIA.	HEIGHT	ZONE	pH	MOIST.	SUN
6	Spreading	12	10	5	N	M	F



## *Fraxinus americana*

White Ash

Oleaceae

**BEST ID:** Rust-colored, downy buds partly surrounded by leaf scar; shorter, stouter seeds compared to Green Ash

**LEAF:** Opposite, pinnately compound, 8-15" long, 5-9 leaflets 2-4" long, 1-3" wide, ovate to ovate-lanceolate

**PROBLEMS:** Leaf rust, leaf spot, canker, dieback, ash borer, webworm, ash yellow

**SOIL PREFERENCE:** Well-drained, deep

**NOTES:**

**NATIVE HABITAT:** N. America

LAB	FORM	DIA.	HEIGHT	ZONE	pH	MOIST.	SUN
	Spreading	120	120	3	N	M	F





## *Fraxinus pennsylvanica*

Green Ash

Oleaceae

**BEST ID:** Leaf scar shaped like a half moon. Buds above leaf scar

**LEAF:** Opposite, pinnately compound, 12" long, 5-9 leaflets 2-5" long and 1" wide, ovate to oblong-lanceolate

**PROBLEMS:** Fall webworm, ash borer, scale

**SOIL PREFERENCE:** Adapted to most soil conditions

**NOTES:** Drought and pH tolerant; found in wet sites in its native habitat

**NATIVE HABITAT:** N. America

LAB	FORM	DIA.	HEIGHT	ZONE	pH	MOIST.	SUN
6	Pyramidal	30	60	3	N	M	F



## *Ginkgo biloba*

Maidenhair Tree

Ginkgoaceae

**BEST ID:** Fan-shaped leaves

**LEAF:** Alternate, simple, fan-shaped, 2-3" long and wide

**PROBLEMS:** Leaf spot; none serious

**SOIL PREFERENCE:** Well-drained; sandy, deep; adapted to most soil conditions

**NOTES:** Messy, foul smelling fruit can be a problem; tolerant of air pollution

**NATIVE HABITAT:** China

LAB	FORM	DIA.	HEIGHT	ZONE	pH	MOIST.	SUN
4	Upright	50	100	4	N	M	F



## *Hedera helix*

English Ivy

Araliaceae

**BEST ID:** Ovate to rhombic, 3-5 lobed leaves, grown as a ground cover or climbing vine

**LEAF:** Simple, alternate, evergreen, 3-5 lobed on juvenile shoots; adult leaves ovate to rhombic, entire

**PROBLEMS:** Bacterial leaf spot, canker, powdery mildew, leaf spot, mealybug, aphids, scale, caterpillars, two-spotted mite

**SOIL PREFERENCE:** Well-drained, rich, organic

**NOTES:** Cold hardy climbing vine also used as in indoor plant.

**NATIVE HABITAT:** Europe

LAB	FORM	DIA.	HEIGHT	ZONE	pH	MOIST.	SUN
11	Trailing			4	N	M	F





## *Hibiscus syriacus*

Rose of Sharon

Malvaceae

**BEST ID:** Many round buds with stipules at twig tip

**LEAF:** Alternate, simple, ovate or rhombic-ovate, 2-4" long, palmately veined, 3-lobed, toothed

**PROBLEMS:** Leaf spot, bacterial leaf spot, blights, canker, rust, aphids, Japanese beetle, mining scale, foliar nematodes

**SOIL PREFERENCE:** Adapted to most soil conditions

**NOTES:** Tolerant of summer heat

**NATIVE HABITAT:** China

LAB	FORM	DIA.	HEIGHT	ZONE	pH	MOIST.	SUN
4	Upright	6	10	4	N	M	F



## *Hydrangea quercifolia*

Oakleaf Hydrangea

Hydrangeaceae

**BEST ID:** Large, tomentose, cinnamon-brown buds; tomentose, cinnamon-brown stem

**LEAF:** Opposite, simple, resembles an oak leaf, 3-7 lobes, 3-8" long

**PROBLEMS:** Leaf blight; none serious

**SOIL PREFERENCE:** Well-drained; adapted to most soil conditions

**NOTES:** Oklahoma Proven Shrub 1999

**NATIVE HABITAT:** N. America

LAB	FORM	DIA.	HEIGHT	ZONE	pH	MOIST.	SUN
6	Globose	10	8	5	A	M	P



## *Ilex cornuta*

Chinese Holly

Aquifoliaceae

**BEST ID:** Leaves sometimes a perfect square, oblong-rectangular, 3 spines at apex, 1-2 on each side at base

**LEAF:** Simple, alternate, evergreen, short-stalked, 1-4" long, 1-3" wide, oblong-rectangular, 3 spines at apex, 1-2 spines on each side at base

**PROBLEMS:** Scale

**SOIL PREFERENCE:** Adapted to most soil conditions

**NOTES:** Heat tolerant, pH adaptable, one of the toughest broad-leaf evergreens for Oklahoma

**NATIVE HABITAT:** China

LAB	FORM	DIA.	HEIGHT	ZONE	pH	MOIST.	SUN
10	Globose	15	13	6	A	M	F



## *Ilex crenata*

Japanese Holly

Aquifoliaceae

**BEST ID:** Small leaves dotted beneath with blackish glands

**LEAF:** Simple, alternate, evergreen, short-stalked, elliptic or obovate to oblong-lanceolate, 1/2-1" long, crenate-serrulate, dotted beneath with blackish glands

**PROBLEMS:** Spider mites, nematodes

**SOIL PREFERENCE:** Well-drained

**NOTES:** Chlorosis in high pH soils

**NATIVE HABITAT:** Japan

LAB	FORM	DIA.	HEIGHT	ZONE	pH	MOIST.	SUN
10	Globose	10	10	5	A	M	F





## *Juniperus chinensis 'Keteleerii'*

Chinese Juniper

Cupressaceae

**BEST ID:**

**LEAF:** Scale-like, pointed, overlapping, rhombic in outline;  
juvenile awl-shaped, 1/3" long

**PROBLEMS:** Phomopsis and Kabatina blights; relatively trouble-free

**SOIL PREFERENCE:** Well-drained; pH adaptable

**NOTES:** Common in midwestern landscapes

**NATIVE HABITAT:** China

LAB	FORM	DIA.	HEIGHT	ZONE	pH	MOIST.	SUN
	Conical	20	20	4	N	M	F





## *Juniperus horizontalis* 'Blue Rug'

Creeping Juniper

Cupressaceae

**BEST ID:** Soft to the touch

**LEAF:** Soft-textured, glaucous, scale-like, 1/16" long, in 4 ranks, ovate to oblong, pointed

**PROBLEMS:** Phomopsis blight, spider mites

**SOIL PREFERENCE:** Adapted to most soil conditions

**NOTES:** One of the most popular ground cover junipers in U.S; may turn purplish in winter

**NATIVE HABITAT:** N. America

LAB	FORM	DIA.	HEIGHT	ZONE	pH	MOIST.	SUN
	Spreading	8	1	4	N	M	F



## *Juniperus x media 'Pfitzeriana'*

Pfitzer Juniper

Cupressaceae

**BEST ID:** Large shrub with male cones and branches ascending at a 45 degree angle

**LEAF:** Two types; scale like, awl-shaped; main branches emerge at 45 degree angle

**PROBLEMS:** Phomopsis and Kabatina blights

**SOIL PREFERENCE:** Well-drained; adapted to most soil conditions

**NOTES:** uniperus x media is best described as a group of hybrid shrubs. We will use 'Pfitzeriana' to designate male cultivars in this group of hybrids.

**NATIVE HABITAT:** Garden

LAB	FORM	DIA.	HEIGHT	ZONE	pH	MOIST.	SUN
	Spreading	20	6	3	N	M	F



## *Koelreuteria paniculata*

Golden-Rain Tree

Sapindaceae

**BEST ID:** Fruit a 3-valved, dehiscent, papery capsule

**LEAF:** Alternate, pinnate or bipinnately compound, 6-18" long, 7-15 leaflets; each leaflet ovate to ovate-oblong, 1-4" long, crenate-serrate

**PROBLEMS:** Coral-spot fungus, leaf spot, canker, wilt, root rot, nematode; none serious

**SOIL PREFERENCE:** Adapted to most soil conditions

**NOTES:** Tolerates drought, heat, and high pH

**NATIVE HABITAT:** China

LAB	FORM	DIA.	HEIGHT	ZONE	pH	MOIST.	SUN
10	Globose	40	40	4	N	M	F



## *Lagerstroemia indica*

Crapemyrtle

Lythraceae

**BEST ID:** Fruit, 6-valved dehiscent capsule persisting through winter

**LEAF:** Opposite, the upper alternate, or in whorls of 3, simple, 1-3" long, 3/4-1 1/2" wide, entire, elliptic or obovate to oblong

**PROBLEMS:** Powdery mildew, black spot, sooty mold, tip blight, leaf spot, root rot, aphids, Japanese beetle, Asian ambrosia beetle,

**SOIL PREFERENCE:** Well-drained

**NOTES:** Drought-tolerant

**NATIVE HABITAT:** China

LAB	FORM	DIA.	HEIGHT	ZONE	pH	MOIST.	SUN
6	Upright	15	20	7	N	M	F



## *Ligustrum japonicum*

Japanese Privet

Oleaceae

**BEST ID:** Thick green sub-opposite leaves

**LEAF:** Simple, opposite, ovate, 2-4" long, 2" wide, entire

**PROBLEMS:** None serious

**SOIL PREFERENCE:** Well-drained; adapted to most soil conditions

**NOTES:** Salt tolerant

**NATIVE HABITAT:** Japan

LAB	FORM	DIA.	HEIGHT	ZONE	pH	MOIST.	SUN
	Spreading	12	12	7-10	N	M	F





## *Liquidambar styraciflua*

Sweetgum

Hamamelidaceae

**BEST ID:** Fruit, spiny gumballs; star-shaped leaves

**LEAF:** Alternate, simple, 4-7" long and wide, star-shaped, 5-7 serrate lobes

**PROBLEMS:** Leafspots, bleeding necrosis, webworm, caterpillars, cottony-cushion scale, sweetgum scale, walnut scale

**SOIL PREFERENCE:** Adapted to many soil conditions

**NOTES:** Iron chlorosis can be a problem on high pH soils; difficult to transplant. Fruit a maintenance problem. 'Rotundiloba' is fruitless.

**NATIVE HABITAT:** N. America

LAB	FORM	DIA.	HEIGHT	ZONE	pH	MOIST.	SUN
4	Pyramidal	45	120	5	A	M	F



## *Liriodendron tulipifera*

Tulip Tree

Magnoliaceae

**BEST ID:** Seed formed on a cone-like aggregate of samaras; the central core persists through winter

**LEAF:** Alternate, simple, 4-6" long and wide

**PROBLEMS:** Aphid, scale, canker, powdery mildew, verticillium wilt

**SOIL PREFERENCE:** Well-drained; deep, loam

**NOTES:** Leaf yellowing is a common problem when water is inadequate; fast growth rate

**NATIVE HABITAT:** N. America

LAB	FORM	DIA.	HEIGHT	ZONE	pH	MOIST.	SUN
7	Globose	100	200	4	A	M	F

*Liriope muscari*

Lily Turf (Monkey Grass)

Liliaceae

**BEST ID:**

**LEAF:**

**PROBLEMS:**

**SOIL PREFERENCE:**

**NOTES:**

**NATIVE HABITAT:** China

<b>LAB</b>	<b>FORM</b>	<b>DIA.</b>	<b>HEIGHT</b>	<b>ZONE</b>	<b>pH</b>	<b>MOIST.</b>	<b>SUN</b>
	Upright		1.5	6	N	M	P