

Class 1 Pork Carcass

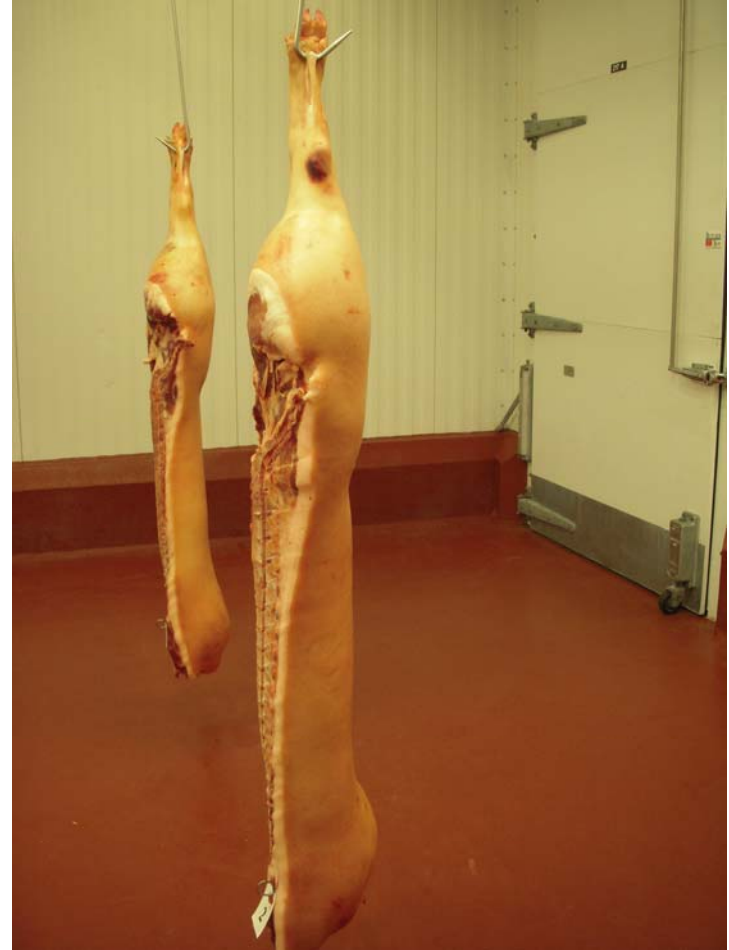
Pork Carcasses



Carcasses 1



Carcasses 2



Carcass 3



Carcass 4



Carcasses 1, 2, 3 and 4



Carcasses 1, 2, 3 and 4



Pork Carcass Questions

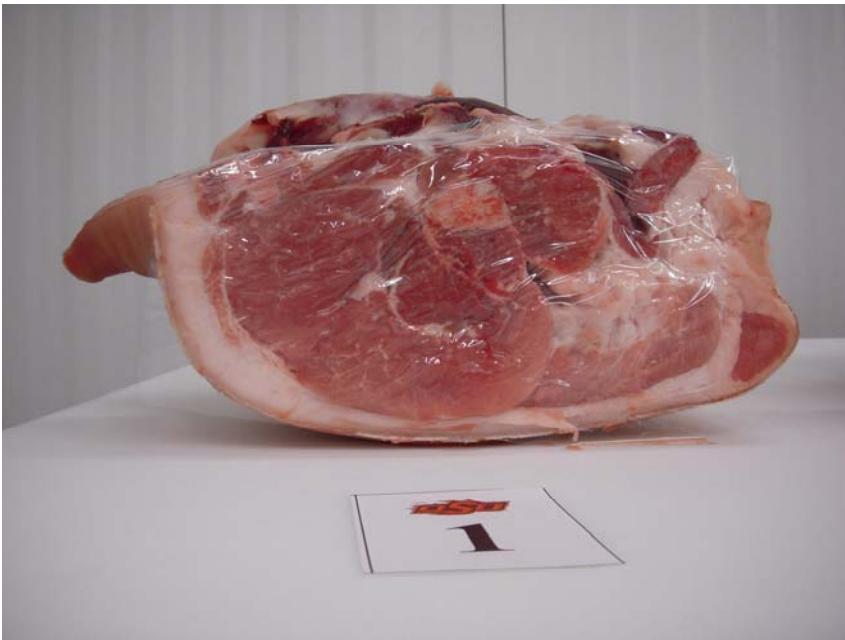
- Which carcass had the least average back fat? 4
- Which carcass had the thickest ham? 4
- Which carcass had the most collar fat? 3
- Which carcass would yield the most retail fat trim? 2
- Which carcass had the most fat opposite the last lumbar vertebrae? 2

Class 2 Pork Cuts - Hams

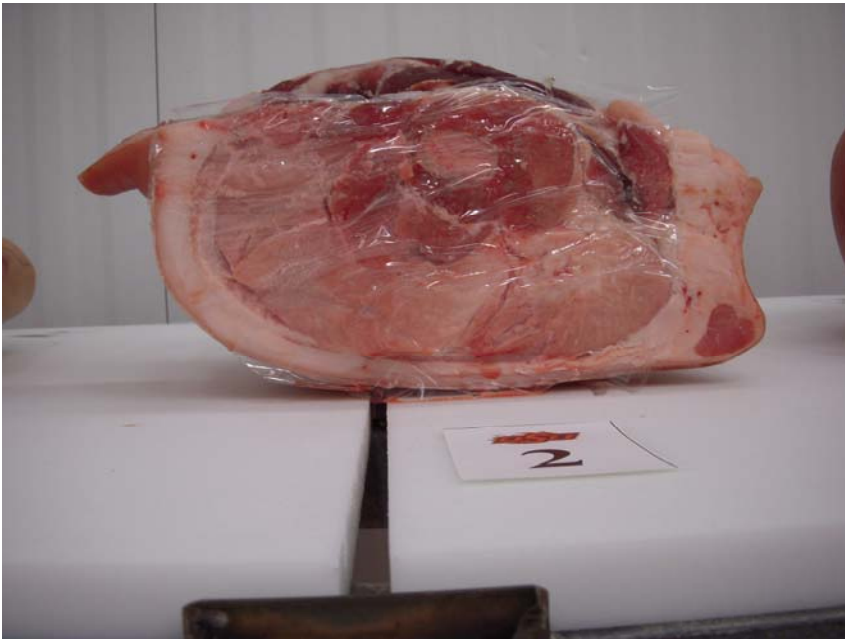
Hams



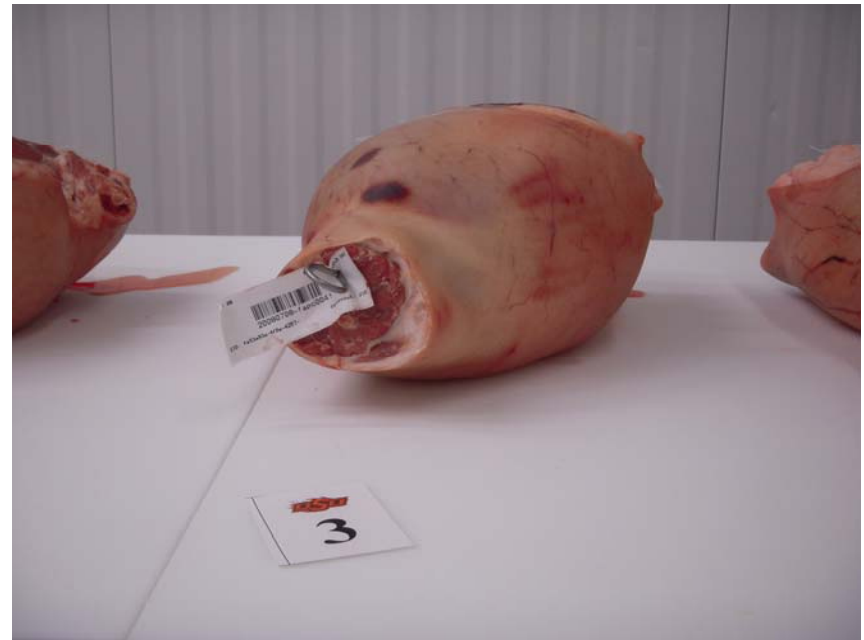
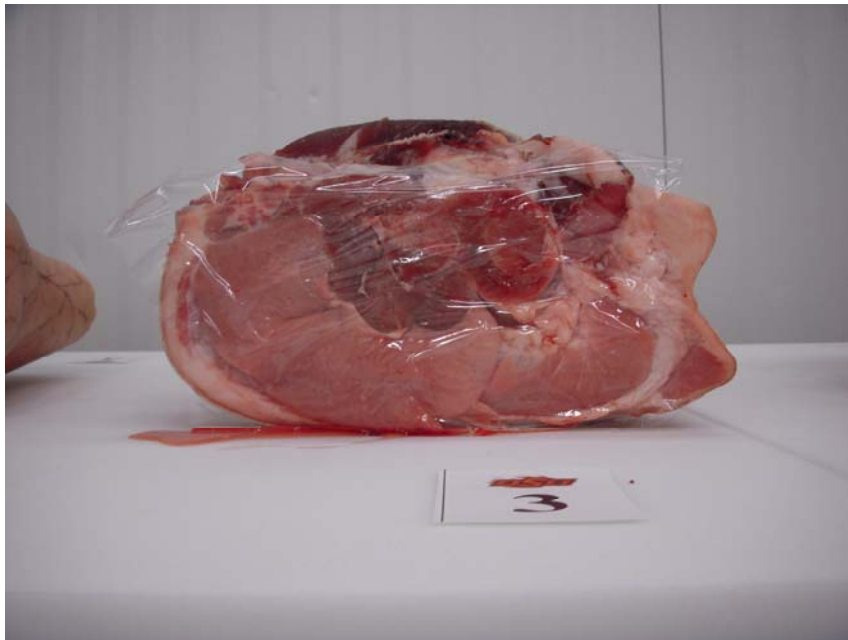
Ham 1



Ham 2



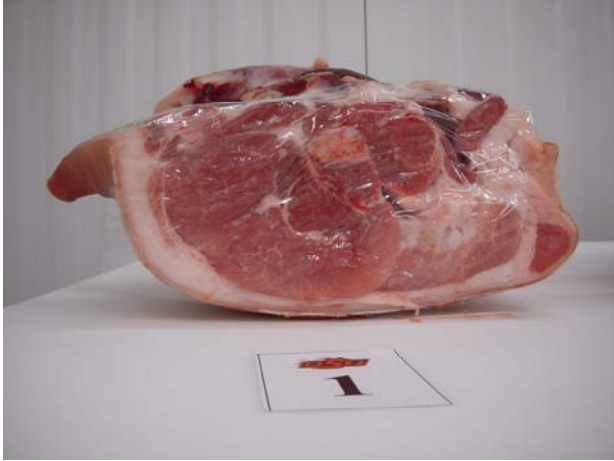
Ham 3



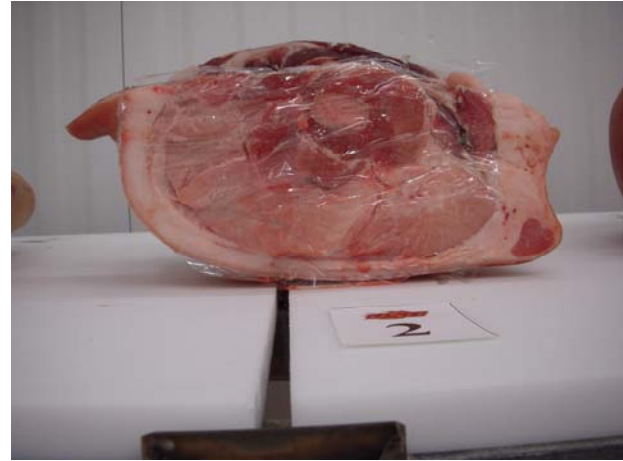
Ham 4



1



2



3



4

1



2

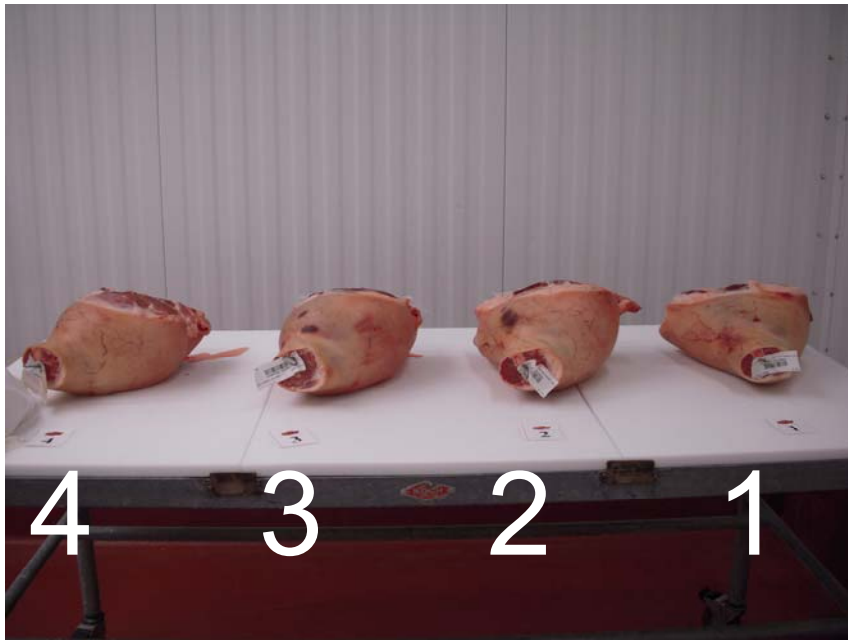


3



4

Hams Rear



Ham Questions

- Which ham had the least desirable palest colored lean in the butt face? 2
- Which ham was the lightest muscled and shallowest? 1
- Which Ham had the most beneath the butt face? 2
- Between 2 & 4 which was trimmer over the collar? 4
- Between 1 & 3 which Ham best combines muscling and trimness? 3

Class 3 Pork Cuts - Loins

Pork Loins



Loin 1



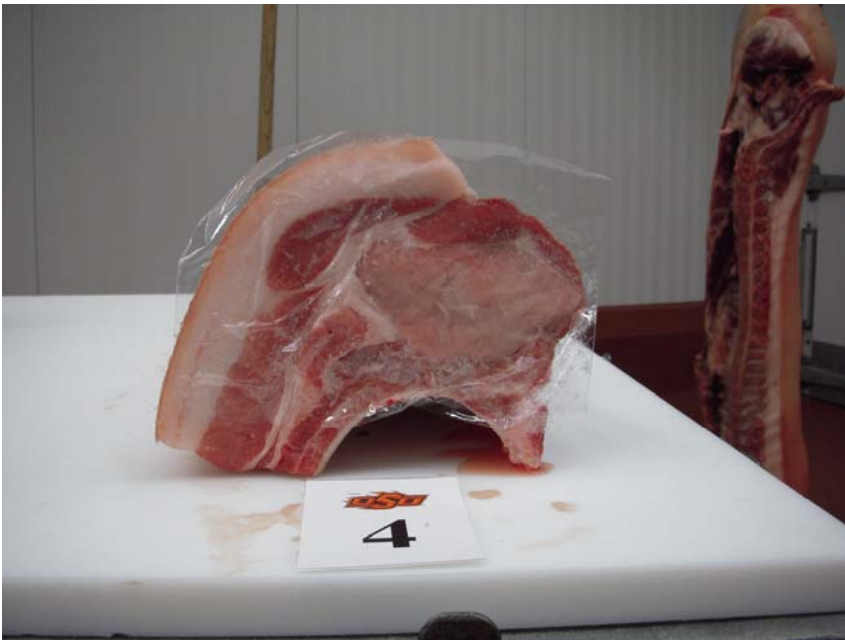
Loin 2



Loin 3



Loin 4



1



2



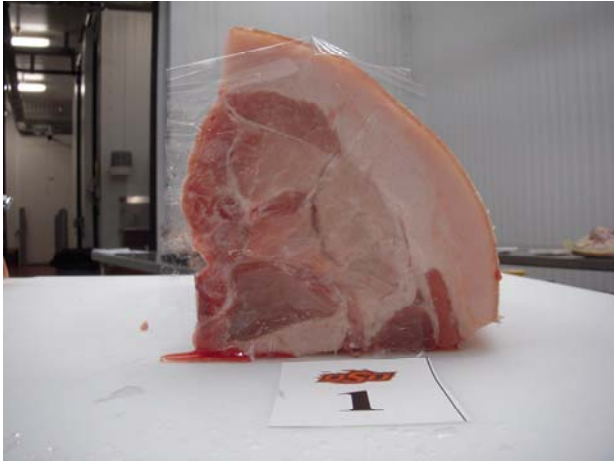
3



4



1



2



3



4



Pork Loins- Sirloin Face



Pork Loin Questions

- Which loin had the palest colored loin eye in the blade face? 1
- Which loin had the most excess retail fat trim? 1
- Between 3 & 4 which loin had the most seam fat in the blade face? 4
- Which loin had the smallest Psoas major? 1
- Between 1 & 2 which loin was trimmer along the back? 2

Class 3 Pork Retail ID

Pork Chops

Pork Chops



Pork Chop 1



Pork Chop 2



Pork Chop 3



Pork Chop 4



1



2



3



3

4



4

Pork Chop Questions

- Which chop had the smallest loin eye? 2
- Which chop had the greatest amount of edible portion? 4
- Which chop had the most trimmable waste? 3
- Between 3 and 4 which chop had the palest colored loin eye? 3
- Between 1 and 2 which chop had the less seam fat? 1

Pork Retail ID 1



Pork loin boneless sirloin chop
(sirloin cutlet)

Pork Retail ID 2



Pork blade steak

Pork Retail ID 3



Pork loin chop

Pork Retail ID 4



Pork sirloin chop

Pork Retail ID 5



Pork tenderloin

Pork Retail ID 6



Pork rib chop

Pork Retail ID 7



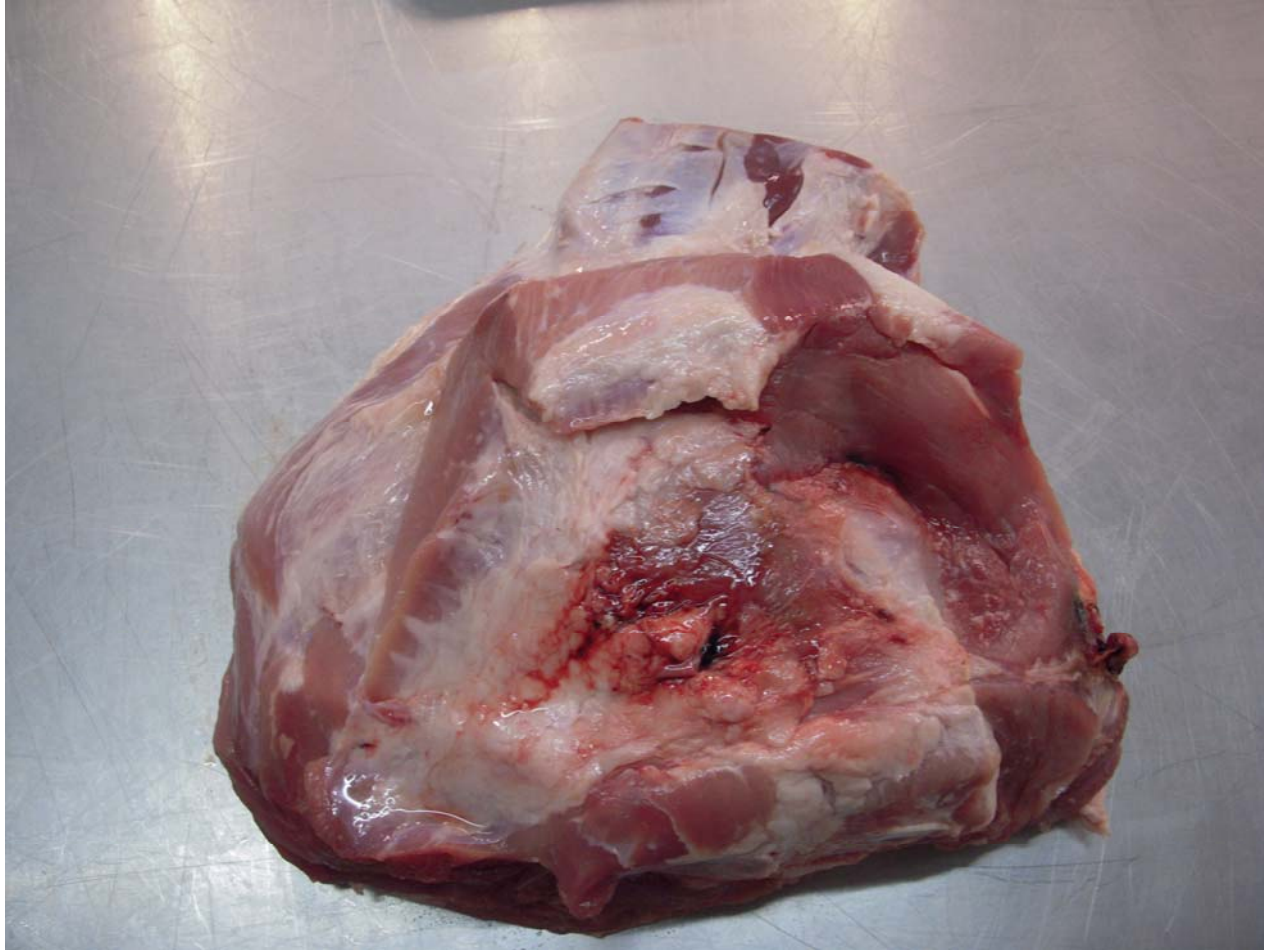
Pork center rib roast

Pork Retail ID 8



Pork Boston butt

Pork Retail ID 9



Pork picnic shoulder

Pork Retail ID 10



Pork Center ham slice (fresh)

Pork Retail ID 11



Pork blade chop

Pork Retail ID 12



Pork spareribs

Pork Retail ID 13



Pork fresh side (belly)

Pork Retail ID 14



Pork Bone-in top loin chop

Pork Retail ID 15



Pork boneless top loin chop

Pork Retail ID 16



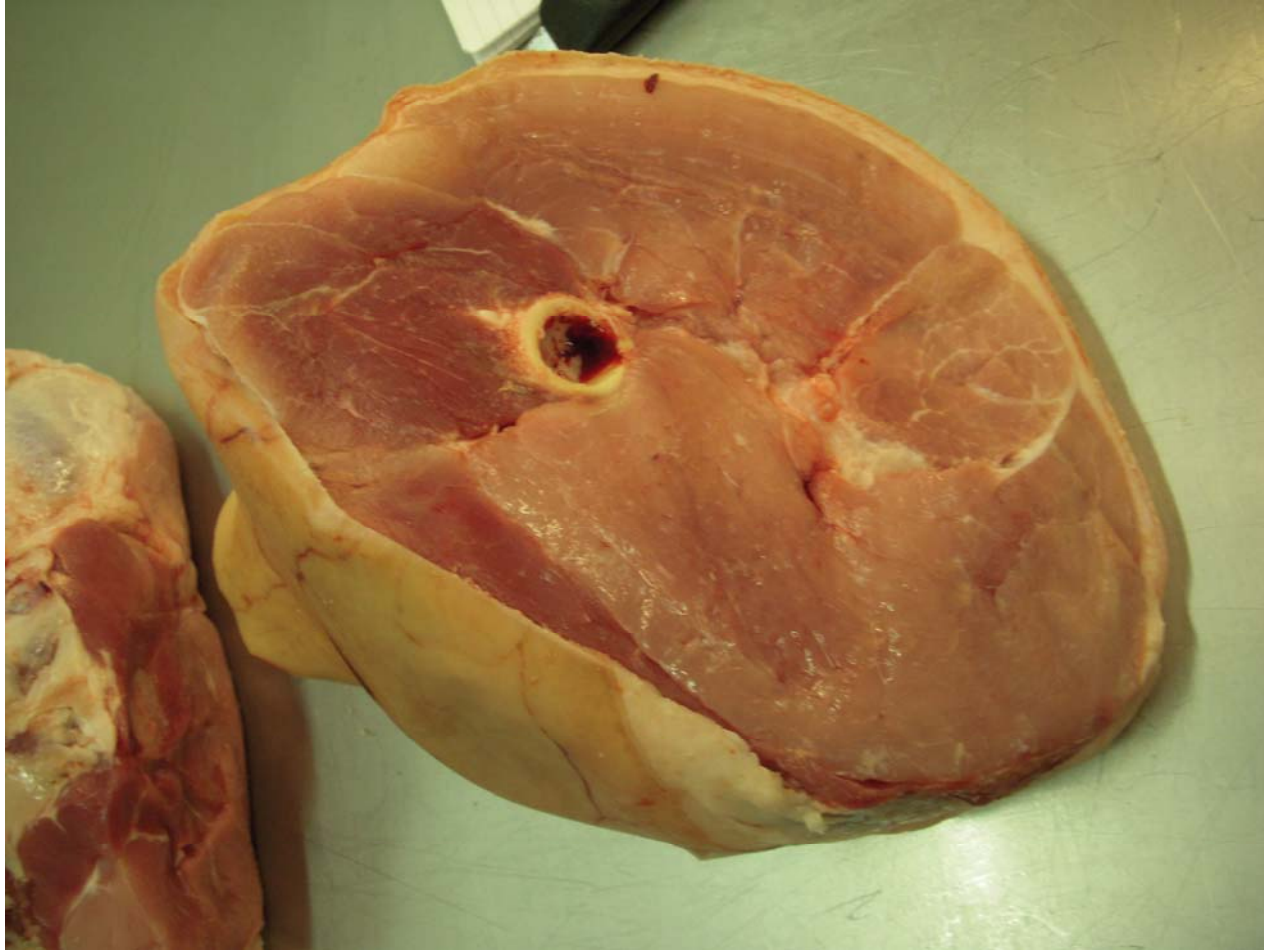
Pork shoulder arm steak

Pork Retail ID 17



Pork Ham rump portion (fresh)

Pork Retail ID 18



Pork Ham shank portion (fresh)